

Grandville

2017



Commodore Homes of Indiana

Our Valued Customer:

Thank you for your interest in the Grandville Series home offering. The Grandville Series is our most flexible series of homes, beginning at a basic standard feature level and giving you the opportunity to choose from our generous offerings.

Grandville Series homes are constructed adhering to multiple building codes. Standard and/or optional features shown may not be available in all building codes. Consult your local builder for more information regarding code specific standards and optional features.

Thank you for your interest in our homes and company!

~ Commodore Homes of Indiana ~



INNOVATIONS FOR LIVING™

NOTES

All 28 wide Grandville floorplans are available as 30 wide

Basement Stairwells are not Available on HUD Homes

Table of Contents

Grandville Flex I

<u>Pg</u>	<u>Name</u>	<u>Model</u>	<u>Size</u>	<u>Sq Ft</u>
4	Cypress I	714A	2860	1600
5	Cypress II	742A	2856	1493
5	Oakwood	715A	2860	1600
6	Hawthorn	734A	2868	1813

Grandville Flex II

<u>Pg</u>	<u>Name</u>	<u>Model</u>	<u>Size</u>	<u>Sq Ft</u>
7	Oakdale I	754A	2856	1493
8	Oakdale II	748A	2860	1600
9	Oakdale III	749A	2864	1707
10	Oakdale IV	750A	2868	1813

<u>Pg</u>	<u>Name</u>	<u>Model</u>	<u>Size</u>	<u>Sq Ft</u>
11	Birch	705A	2844	1173
11	Hemlock	736A	2844	1173
12	Mayberry	752A	2848	1280
13	Hazelnut	753A	2852	1387
13	Elm	721A	2852	1387
14	Evergreen	739A	2856	1493
15	Appleton	751A	2856	1440
16	McIntoch I	761A	2858	1547
16	Buckeye	740A	2860	1600
17	Maplewood	779A	2864	1607
18	Douglas	765A	2868	1813
19	Douglas Photos			
20	Sprucewood	763A	2864	1707
20	Tanoak	773A	2868	1813

21	Juniper	833A	3238	1140
22	Elmwood	844A	3240	1128
23	Mulberry II	838A	3260	1800
23	Riverwood	855A	3276	2280
24	Pinewood	806A	3276	2280
25	Willowood	842A	3276	2280

26	Satinwood	902A	4252/44	1580
27	Birchwood	903A	4252/44	1588



Evermore Custom Cabinets endure a series of rigorous tests, measuring structural integrity. Cabinet doors, drawers and even the finish is tested before earning the KCMA Cabinet Certification.

Precision Cut and Dadoed Construction Fastened and Hot Glued - Ensures a Long Lasting and Square Cabinet Box

3/4" Thick Shelving with Finished Edges - Prevents Warping of Shelves

Base and Wall Cabinet Adjustable Shelving - Fit Your Lifestyle

3/4" Face Frames - Durable and Securely Holds Fasteners for Long Lasting Use

Pocket Screws - Ensure a Strong and Square Frame

Dove-Tail Constructed Drawers - Superior Drawer Strength

Concealed and Recessed Adjustable Hinges - Superior Door Strength

Recessed Toe Kick - Work at Counters with Ease

No Exposed Hanging Cleats - More Storage and Cleaner Look



Manchester Oak
Flat Mission (shown)
or Raised Panel



Driftwood Flat
Mission Panel



Hickory
Raised Panel



Sienna Maple
Raised Panel

KCMA Testing

- *Overhead Cabinets Rated to 500 pound Capacity*
- *Drawers Opened 28,000 Times with Weight*
- *Cabinet Doors Opened 25,000 Times*
- *Extreme Testing of Cabinet Finish*



Visit www.KCMA.org for
more information



Grandville Flex 1

Options Pictured:

- Round Top Front Door
- 27'-4" Twin Peak Dormer
- Shake Siding
- Vertical Siding

Additional Options Built On-Site by Others

- Round Top Front Door
- 27'-4" Twin Peak Dormer

- Shake Siding
- Vertical Siding

Additional Options Built On-Site by Others

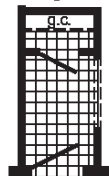
One home design that can be built multiple ways. This popular floorplan provides the customization in the square footage you need.

1st - Choose a Floorplan
2nd - Choose a Kitchen Option
3rd - Choose a Master Bath Option

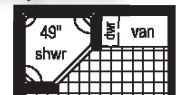
3rd - Choose a Master Bath Option

opt	dbl	ref	S		desk
-----	-----	-----	---	--	------

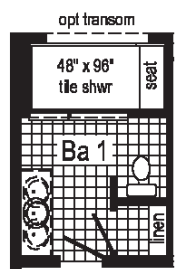
Opt. Formal Foyer



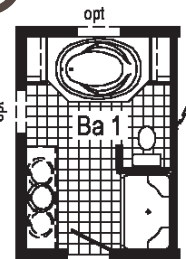
**Opt. 60" Shower
w / Seat**



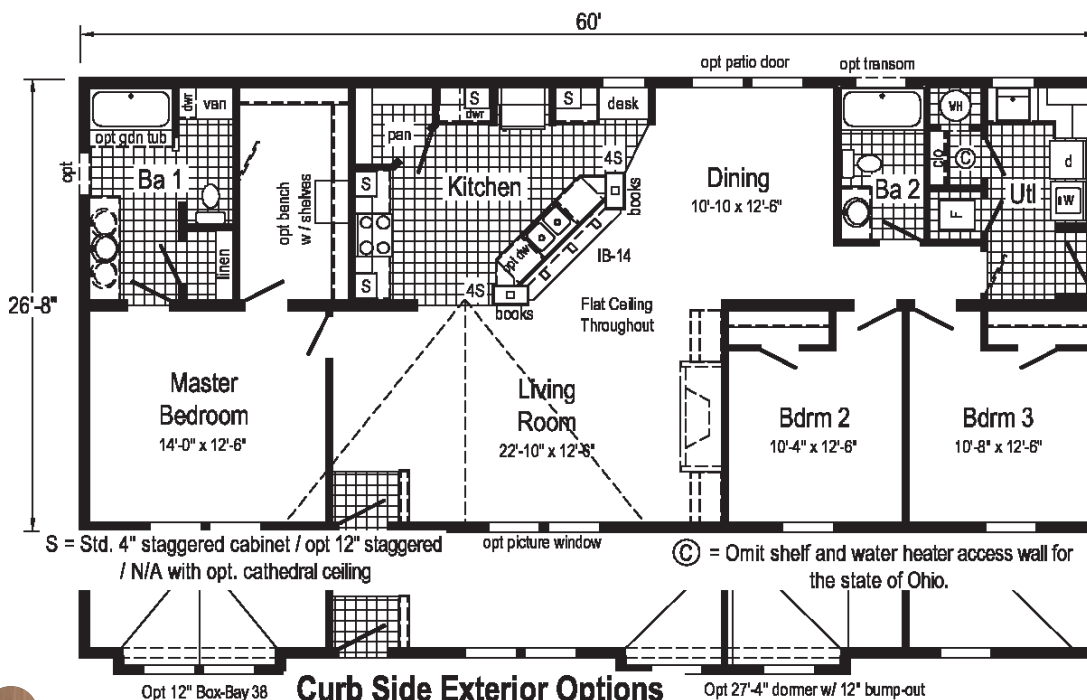
Opt. Corner Shower



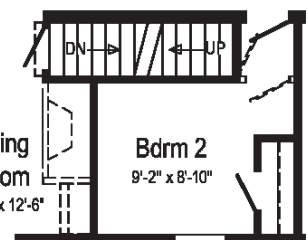
Optional Tranquility Shower



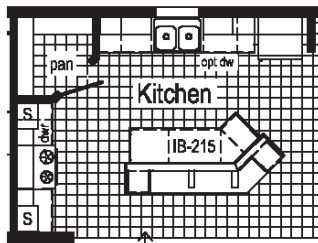
**Optional Glamour
Bath w / Soaker Tub**



2860 - Approx 1600 Sq. Ft.



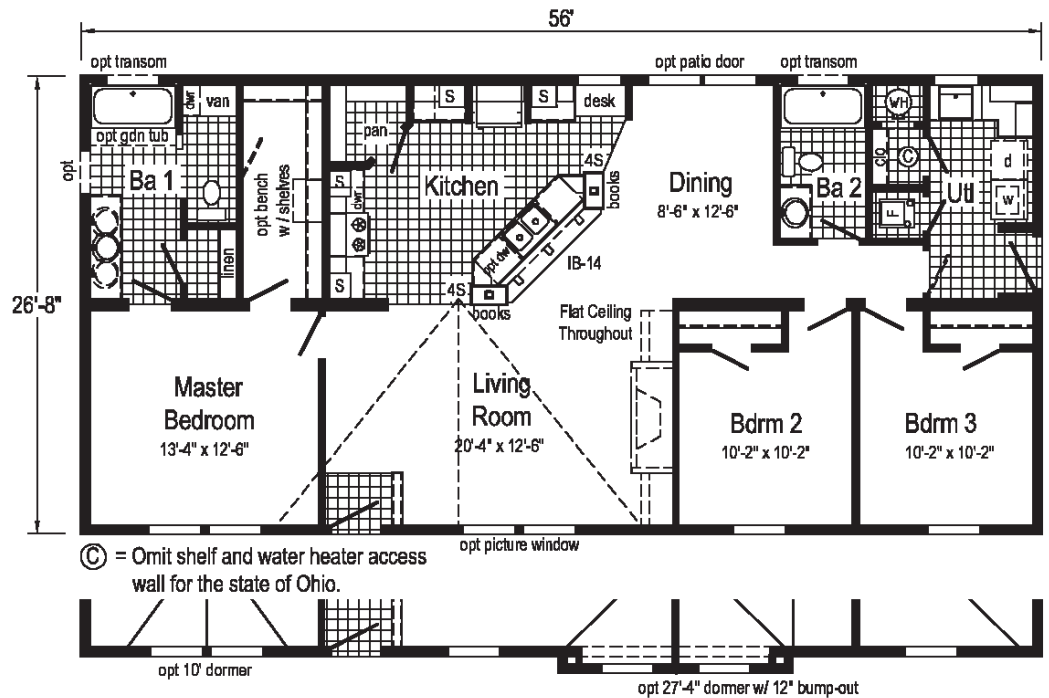
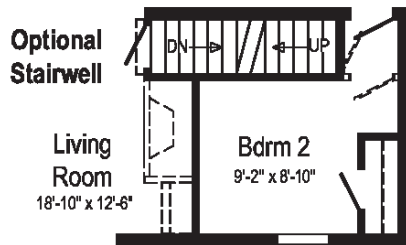
Optional Stairwell



**Option
Island
Kitchen**

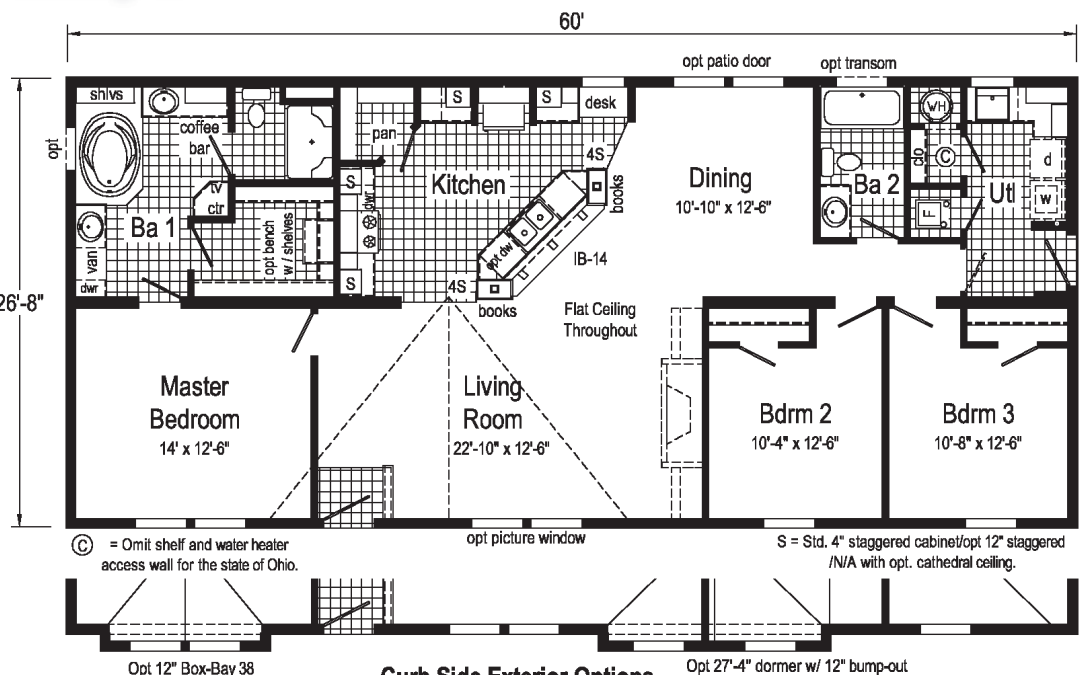
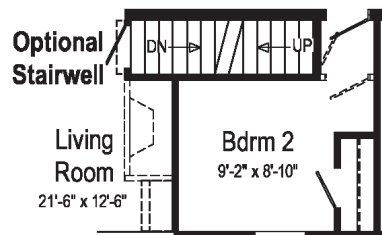
Cypress II (742A)

2856 - Approx 1493 Sq. Ft.



Oakwood (715A)

2860 - Approx 1600 Sq. Ft.



Curb Side Exterior Options

Grandville Flex 1

Hawthorn (734A)

2868 - Approx 1813 Sq. Ft.

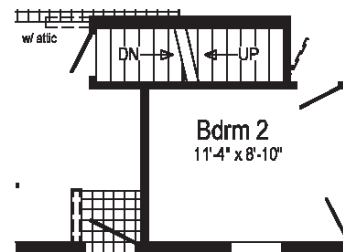
Additional Options Built On-Site by Others

Options Pictured:

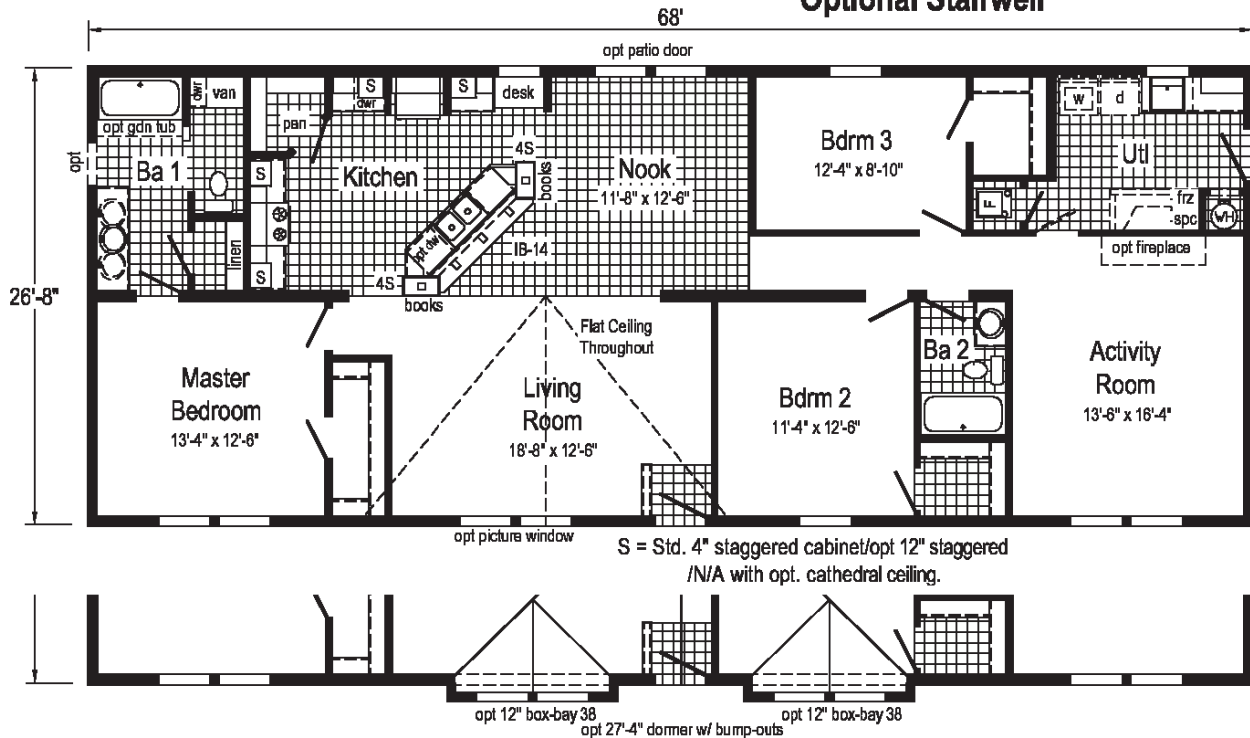
- Round Top Front Door
- 27'-4" Twin Peak Dormer

Visit our website for more photos of
this home at:

www.commodore-in.com



Optional Stairwell



Curb Side Exterior Options

Grandville Flex 11



Oakdale 1 (754A)

2856 - Approx 1493 Sq. Ft.

Additional Options Built On-Site by Others

2856 - Approx 1493 Sq. Ft.

Options Pictured:

- 7/12 Roof
 - 27'-4" Twin Peak Dormer with 12" Bump-out
 - 10' Dormer
 - Oval Front Door
- Coastal Shores Siding
 - Shake Siding
 - Vertical Siding

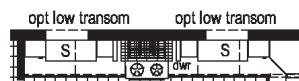
on low transom

on low transom

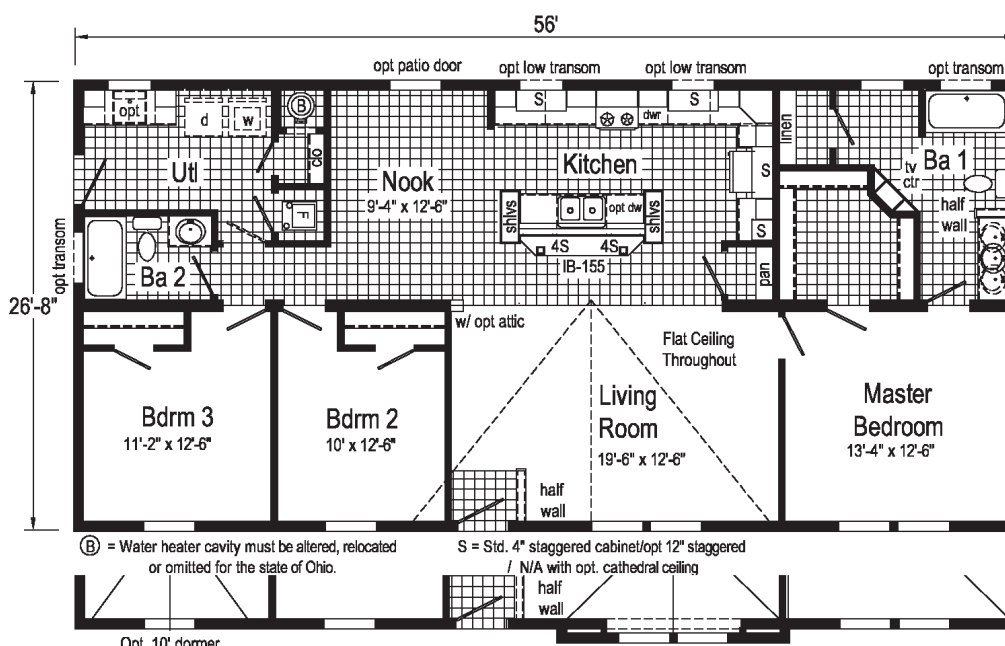
on low transom

on low transom

www.commodore-in.com

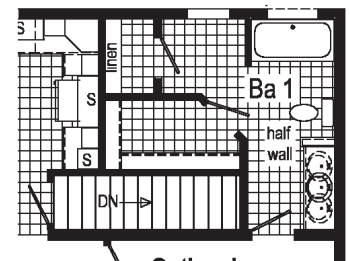


**Optional Chef's
Signature Hood**
(only with flat ceiling)

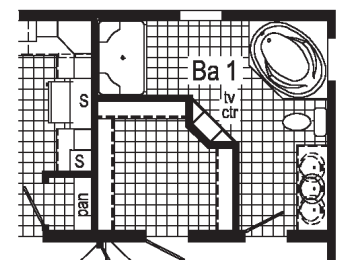


Curb Side Exterior Options

Opt. 27'-4" dormer w/ 12"bump-out



**Optional
Stairwell**
(omits pan)



Optional Glamour Bath

Grandville Flex 11



Oakdale 11 (748A)

2860 - Approx 1600 Sq. Ft.

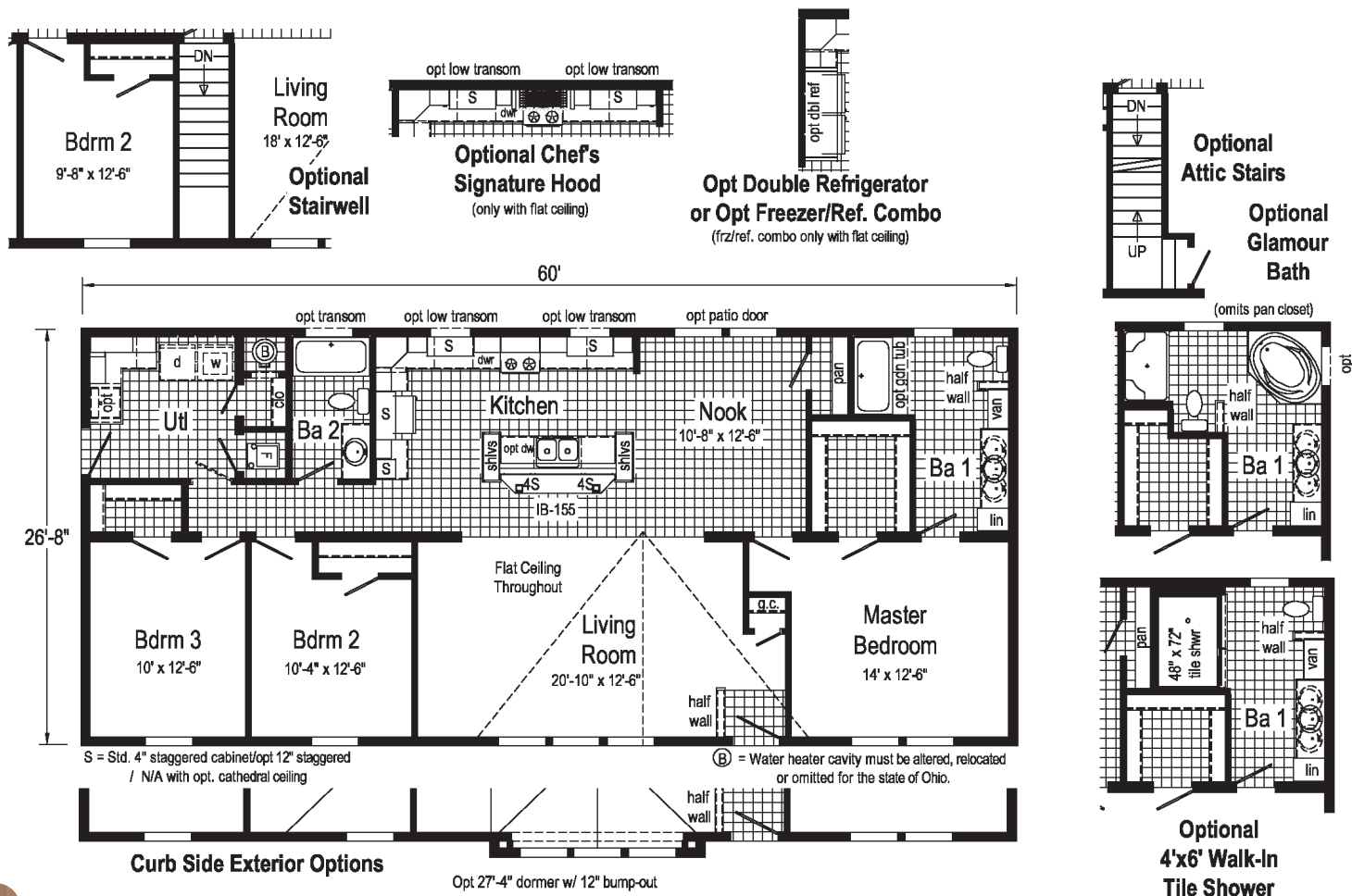
Additional Options Built On-Site by Others

Options Pictured:

- 27'-4" Twin Peak Dormer with 12" Bump-out
- Shake Siding
- Round Top Front Door
- Vertical Siding

Visit our website for more photos of
this home at:

www.commodore-in.com



Grandville Flex 11



Oakdale III (749A)

2864 - Approx 1707 Sq. Ft.

Additional Options Built On-Site by Others

2864 - Approx 1707 Sq. Ft.

Grandville Flex 11



Oakdale III (749A)

2864 - Approx 1707 Sq. Ft.

Additional Options Built On-Site by Others

www.commodore-in.com



Grandville Flex 11

Oakdale IV (750A)

2868 - Approx 1813 Sq. Ft.

Additional Options Built On-Site by Others

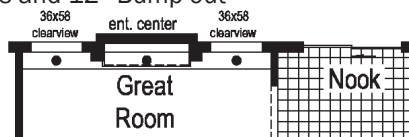
Options Pictured:

- 9/12 Roof
- 2-6' Cape Dormers
- 27'-4" Twin Peak Dormer with Egress and 12" Bump-out

- 12" Box Bay 38
- Round Top Front Door
- Coast Shores Siding
- Shake and Vertical Siding

Visit our website for more photos of this home at:

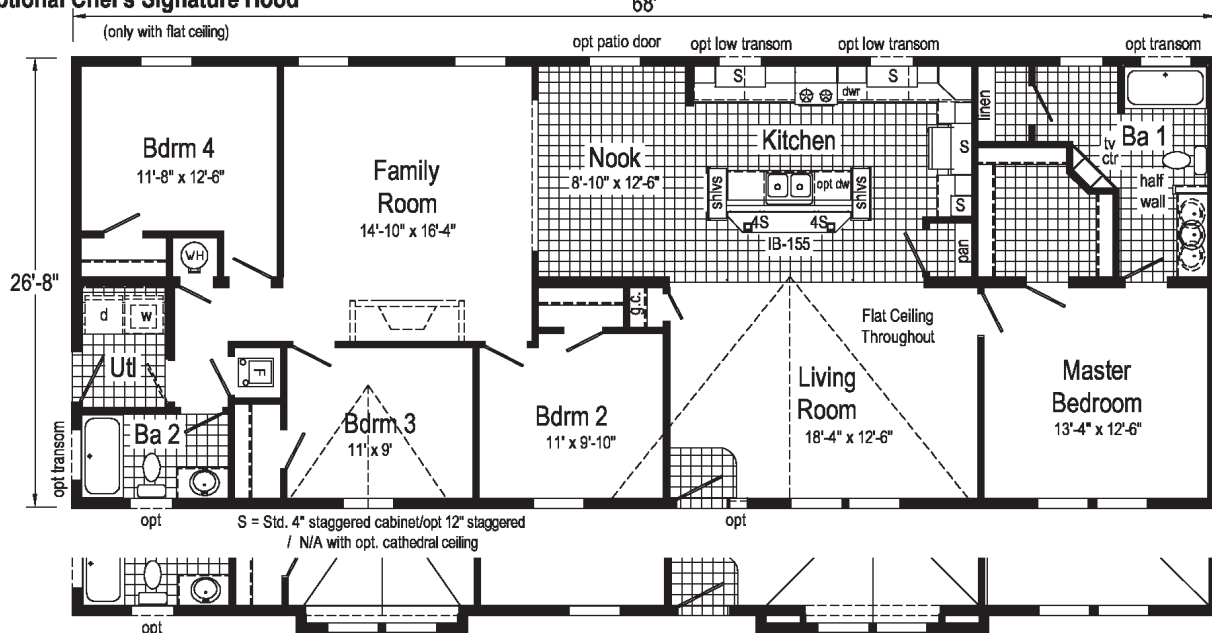
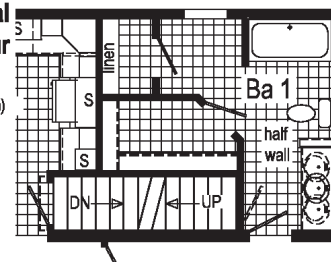
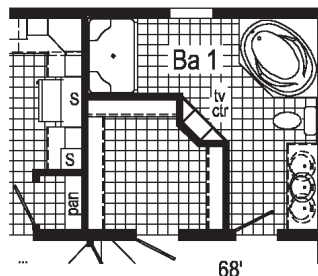
www.commodore-in.com



Optional Clearview Entertainment Wall

opt. patio door at nook required with this option

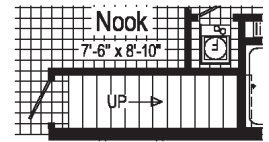
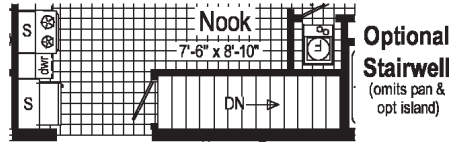
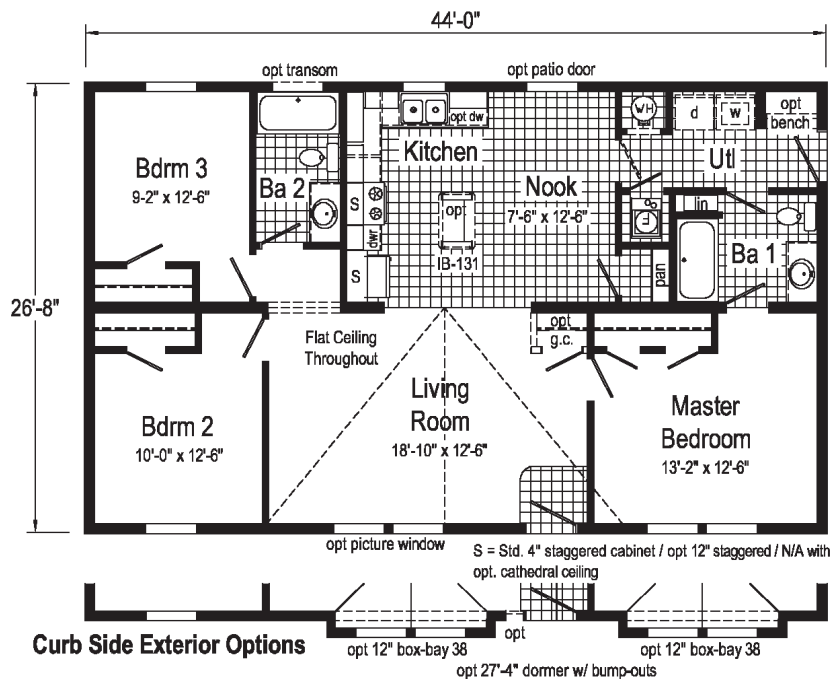
opt low transom opt low transom



Curb Side Exterior Options

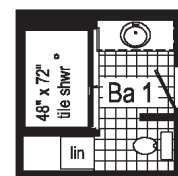
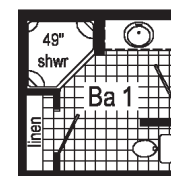
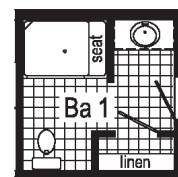
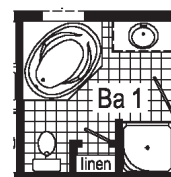
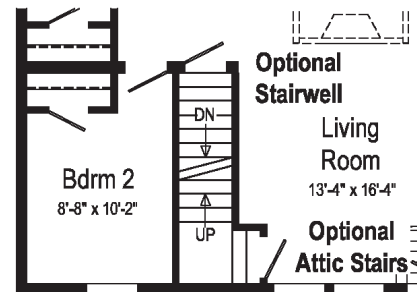
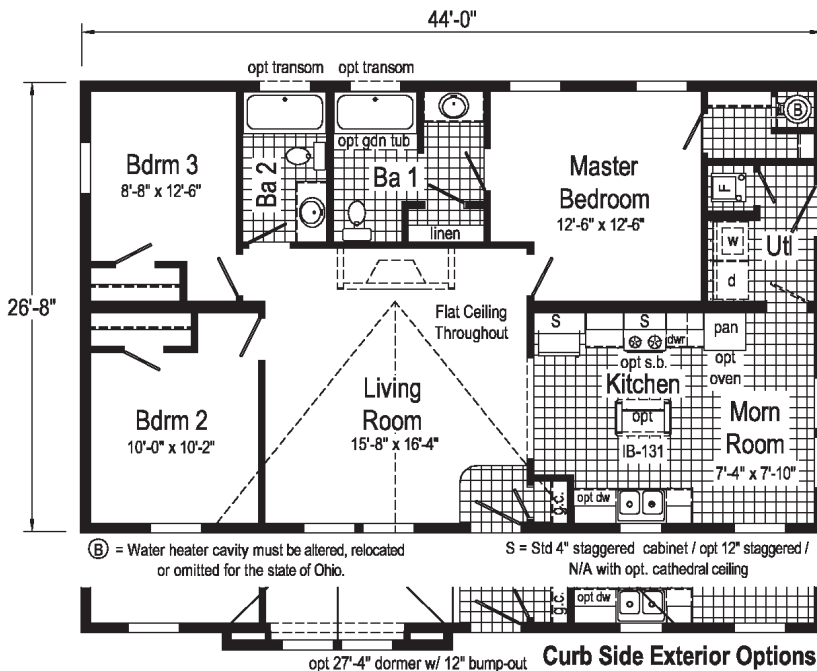
Birch (705A)

2844 - Approx 1173 Sq. Ft.



Hemlock (736A)

2844 - Approx 1173 Sq. Ft.



(B) = Water heater cavity must be altered, relocated or omitted for the state of Ohio.

S = Std 4" staggered cabinet / opt 12" staggered / N/A with opt. cathedral ceiling

Mayberry (752A)

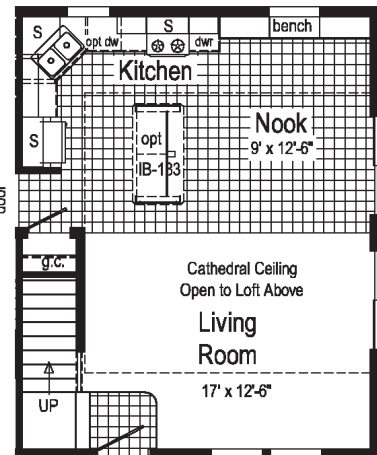
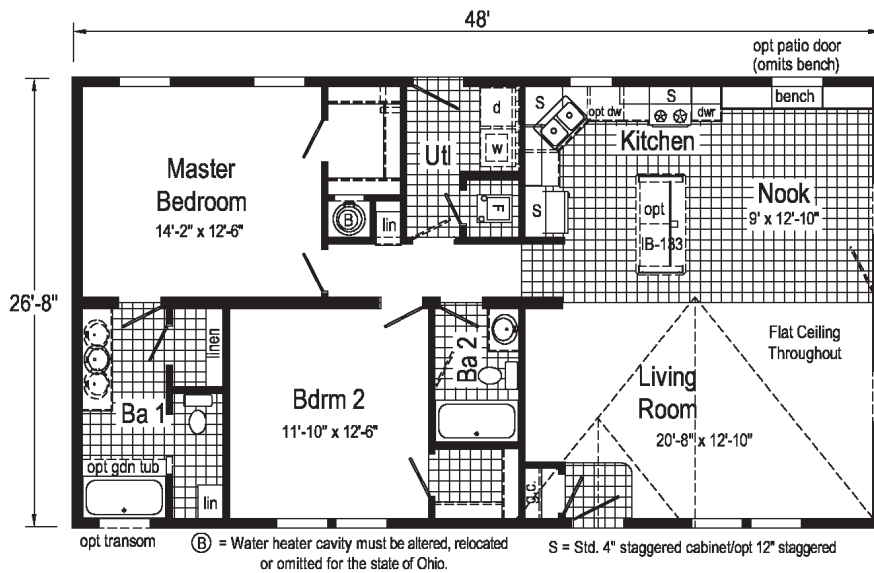
2848 - Approx 1280 Sq. Ft.



Additional Options Built On-Site by Others

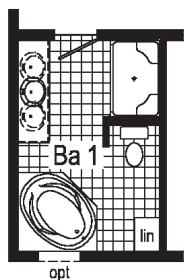
Options Pictured:

- 9/12 Roof
- Round Top Front Door
- Chalet Option



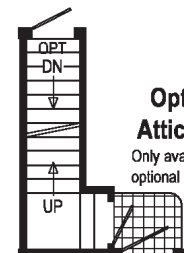
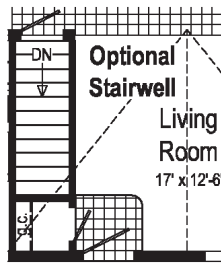
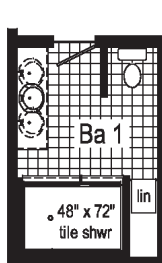
Optional Chalet Plan

Opt. Chalet includes cathedral ceiling open to Loft above, patio doors & chalet windows.
Optional 9/12 roof, stairwell & railing required.



Optional 4'x6' Walk-In Tile Shower

Optional Glamour Bath
(omits linen closet)

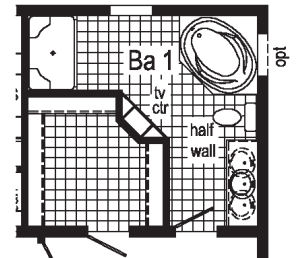
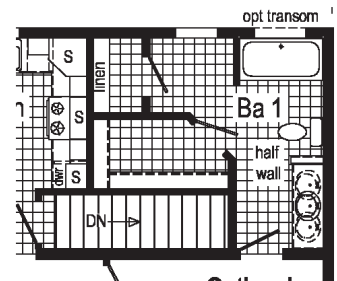
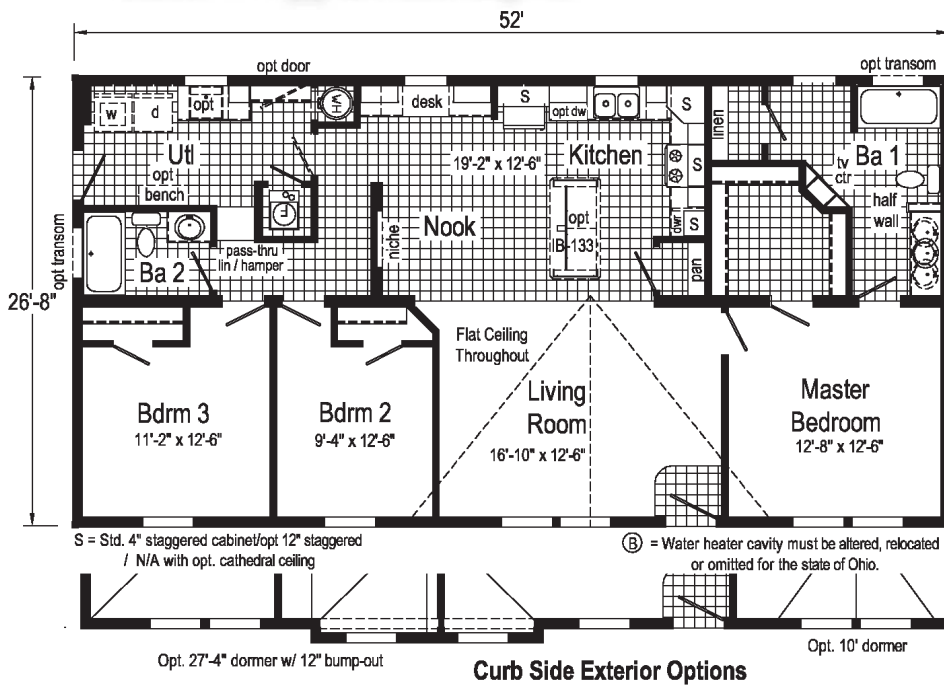


Optional Attic Stairs

Only available with optional 9/12 roof.
(omits g.c.)

Hazelnut (753A)

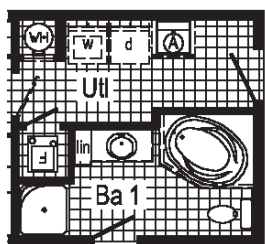
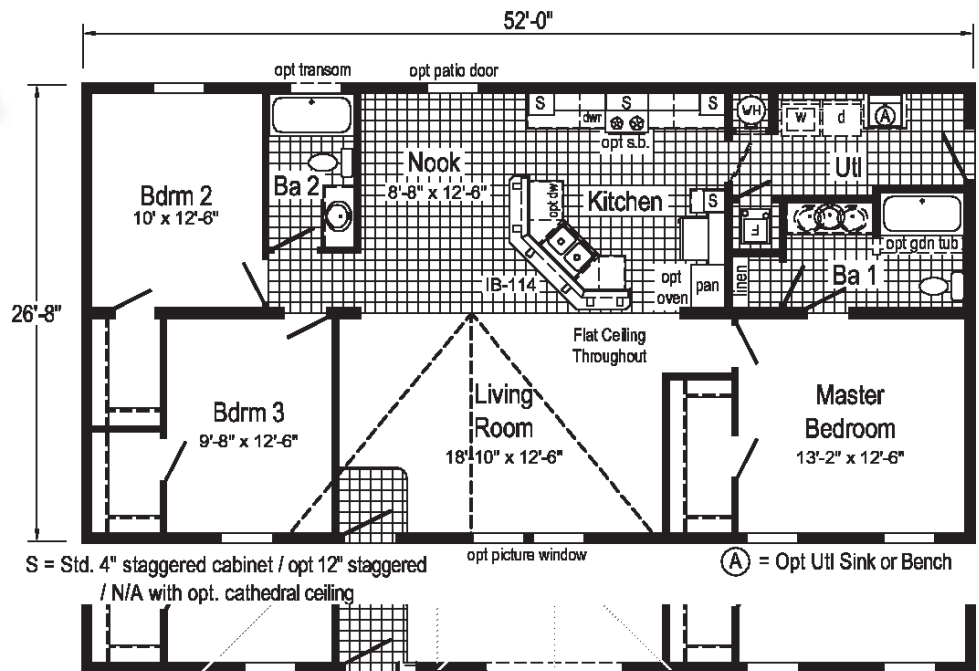
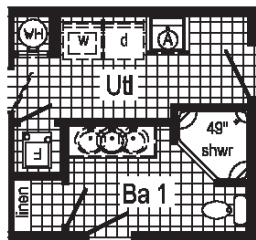
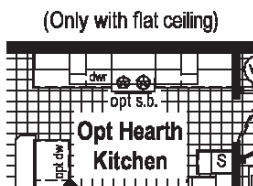
2852 - Approx 1387 Sq. Ft.



Optional Chef's Signature Hood
(only with flat ceiling)

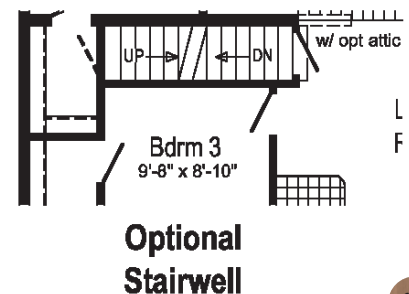
Elm (721A)

2852 - Approx 1387 Sq. Ft.



Opt Double Refrigerator or Opt Freezer/Ref. Combo
(frz/ref. combo only with flat ceiling)
(omits pantry/opt oven)

Optional Chef's Signature Hood
(only with flat ceiling)



Evergreen (739A)

2856 - Approx 1493 Sq. Ft.



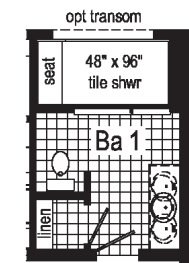
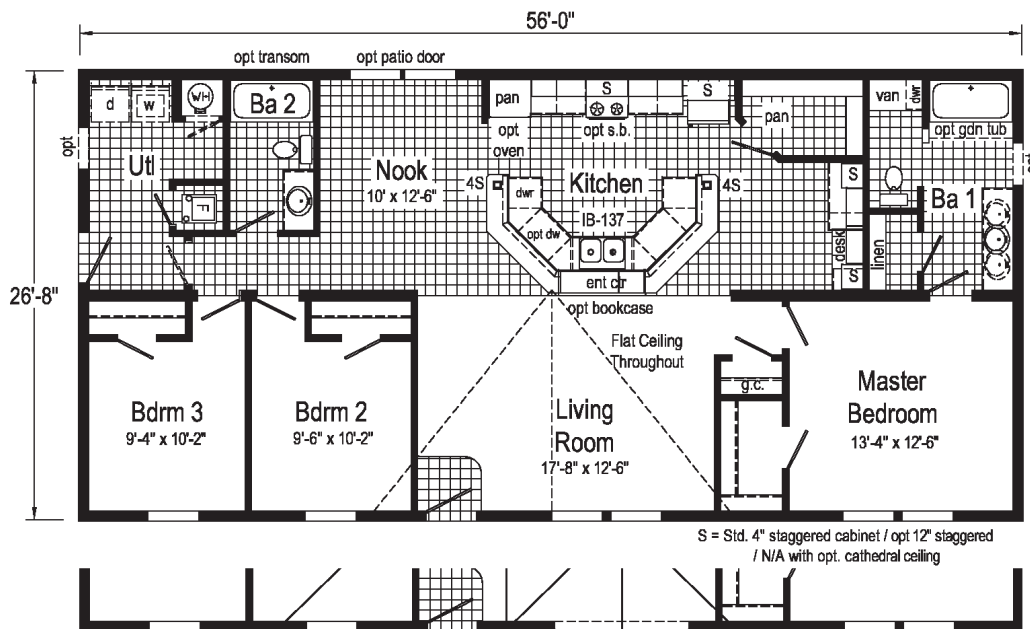
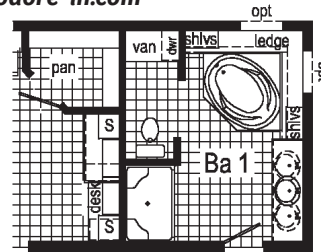
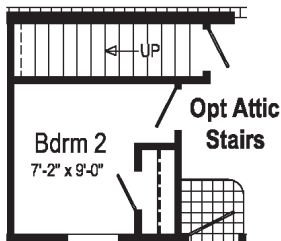
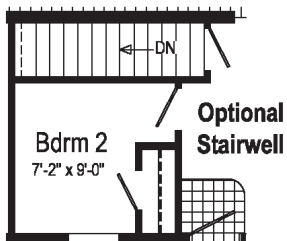
Some Features May Be Optional

Options Pictured:

- 7/12 Roof
- 27'-4" Twin Peak Dormer with 12" Bump-out
- Shake Siding
- Vertical Siding

Visit our website for more photos of this home at:

www.commodore-in.com



Curb Side Exterior Options

Opt. 27'-4" dormer w/ 12" bump-out

Appleton (751A)

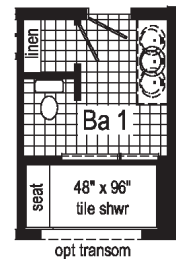
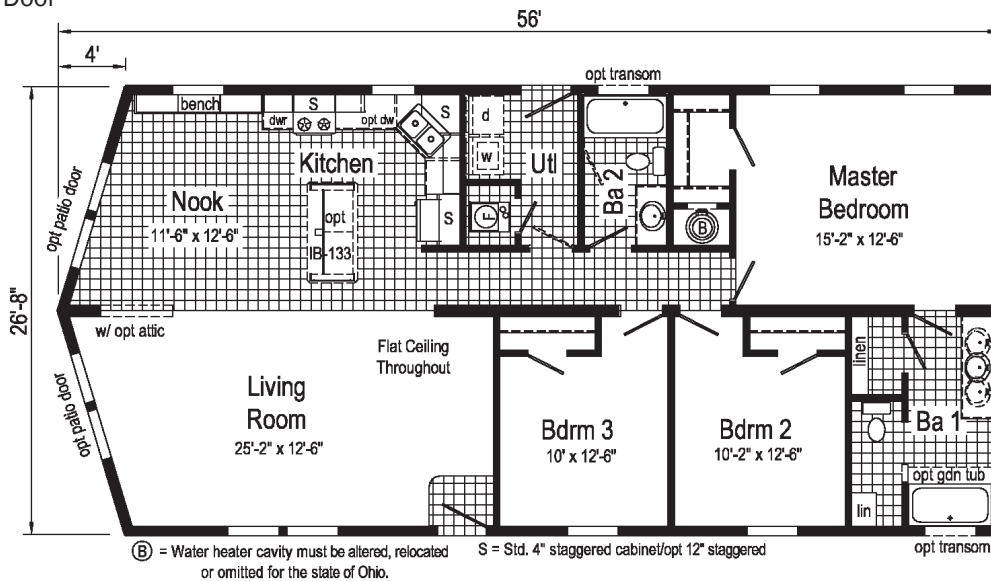
2856 - Approx 1440 Sq. Ft.



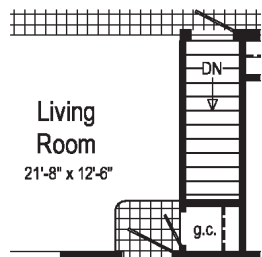
Additional Options Built On-Site by Others

Options Pictured:

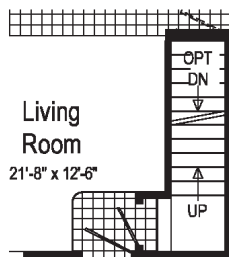
- 7/12 Roof
- Round Top Front Door
- Patio Door



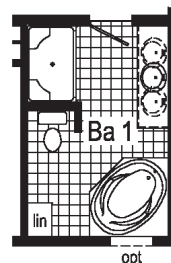
Optional Tranquility Shower



Optional Stairwell



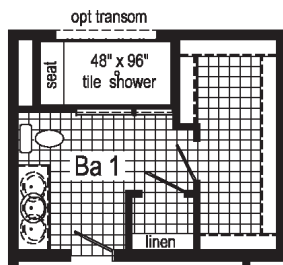
Opt Attic Stairs
(omits g.c.)



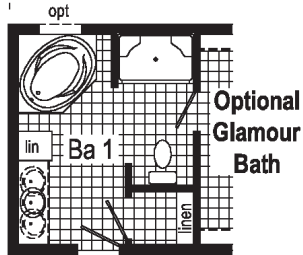
Optional Glamour Bath
(omits linen closet)

McIntoch 1 (761A)

2858 - Approx 1548 Sq. Ft.



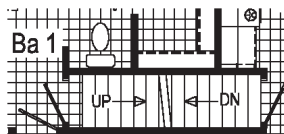
Optional Tranquility Shower



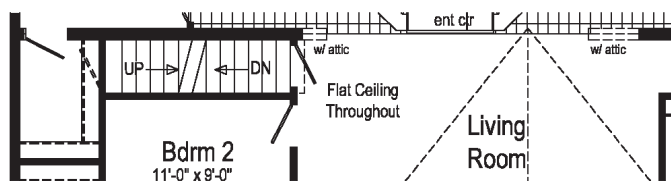
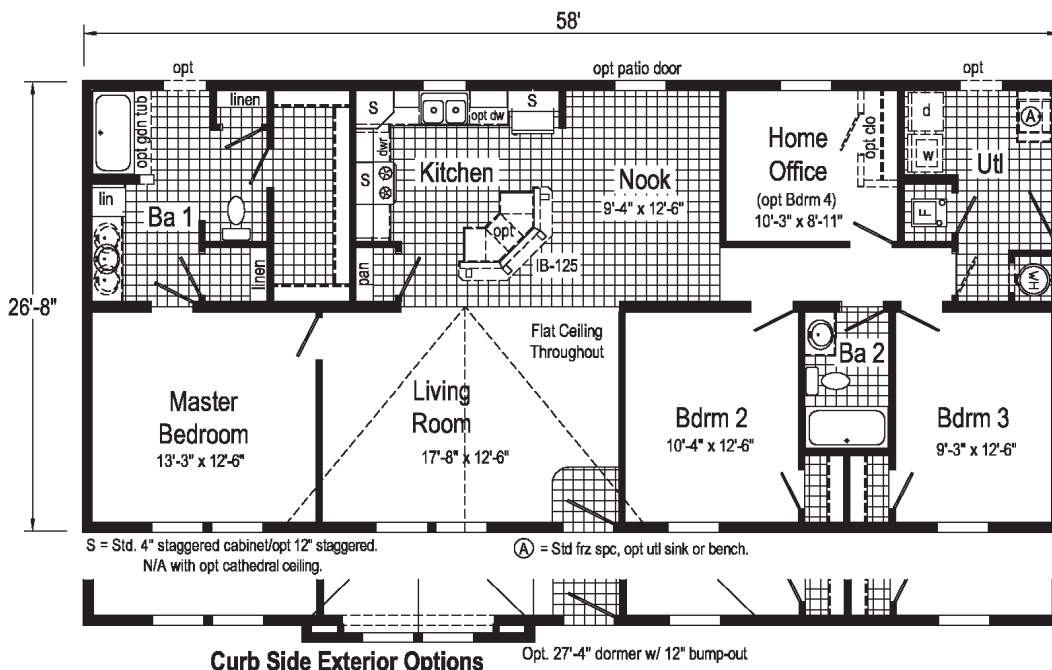
Optional Glamour Bath



Optional Chef's Signature Hood
(only with flat ceiling)



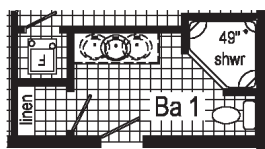
Optional Stairwell
(omits pan & linen)



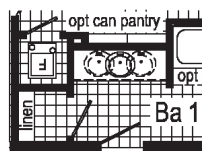
Optional Stairwell

Buckeye (740A)

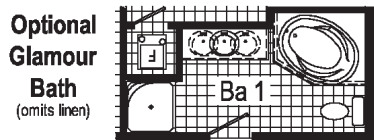
2860 - Approx 1600 Sq. Ft.



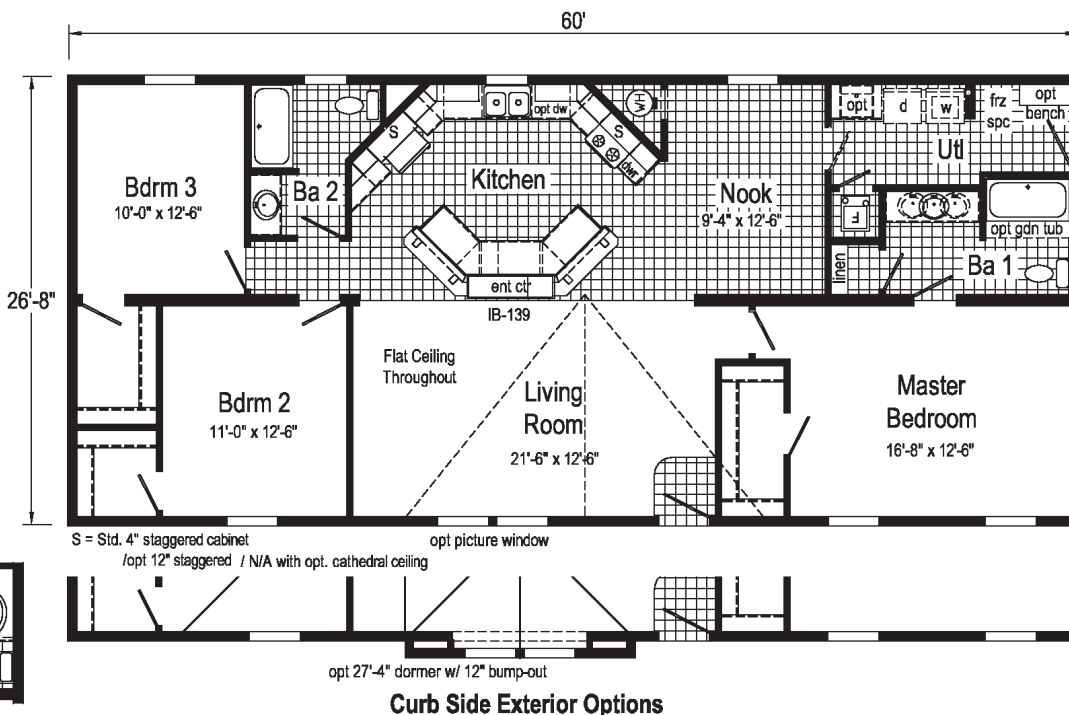
Opt. Corner Shower



Opt. Can Pantry



Optional Glamour Bath
(omits linen)





Maplewood (779A)

Optional 4' x 6' Walk-In Tile Shower

Ba 1

48" x 72" tile shower

lin

Optional Glamour Bath

Ba 1

Living Room

18'-5" x 12'-6"

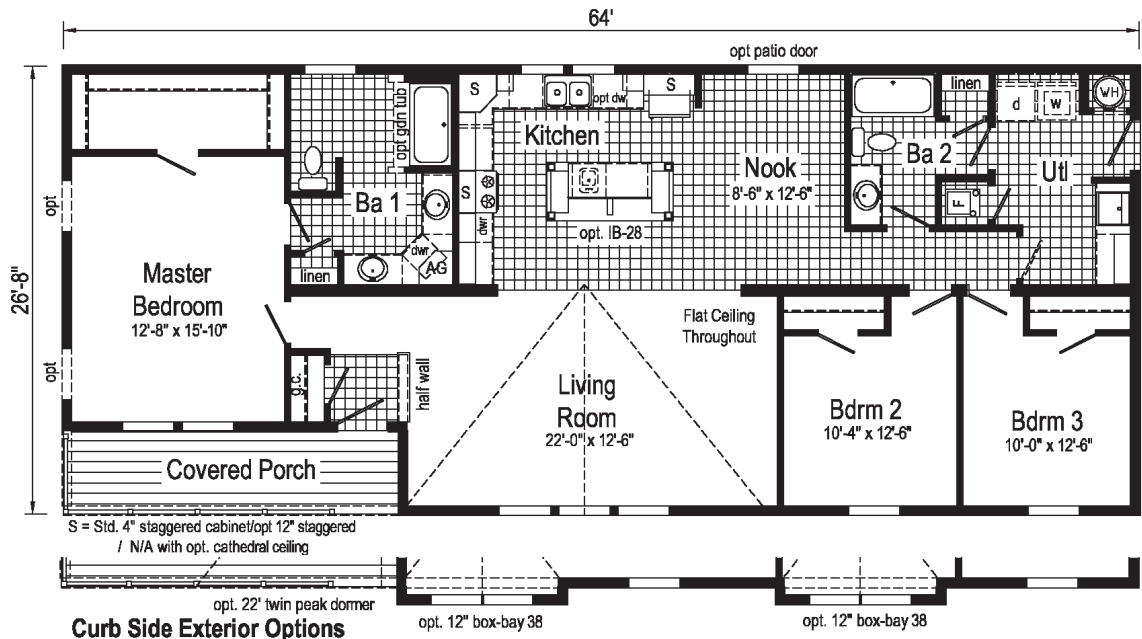
Optional Stairwell

Living Room

18'-5" x 12'-6"

Optional Attic Stairs

Optional Chef's Signature Hood
(only with flat ceiling)



Douglas (765A)

2868 - Approx 1813 Sq. Ft.



Additional Options Built On-Site by Others

Options Pictured:

- 7/12 Roof
- 22' Set Back Dormer
- 10' Dormer
- Box Bay 38

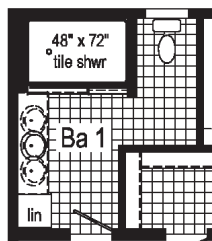
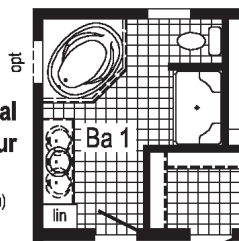
- Round Top Front Door
- Window Lineals
- Coastal Shores Siding

Visit our website for more photos of
this home at:

www.commodore-in.com

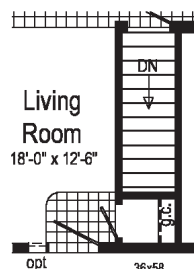
Optional Glamour Bath

(omits linen)



Optional 4'x6' Walk-In Tile Shower

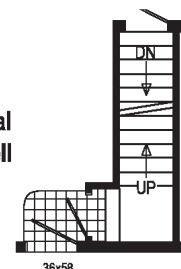
(omits linen)



Living Room

18'-0" x 12'-6"

Optional Stairwell



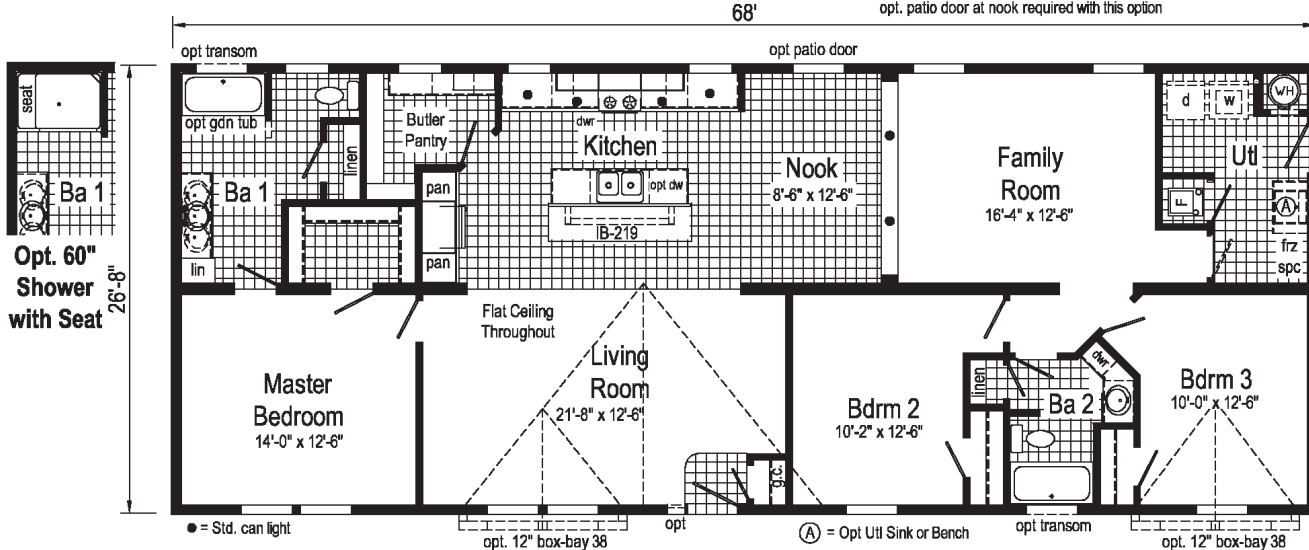
Optional Attic Stairs

(omits g.c.)



Optional Clearview Entertainment Wall

opt. patio door at nook required with this option





Kitchen

Some Features May Be Optional



Butler's Pantry



Family Room



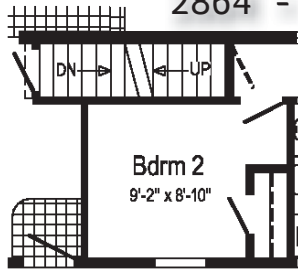
Living Room



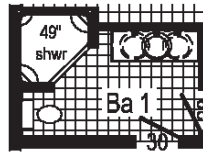
Nook

Sprucewood (763A)

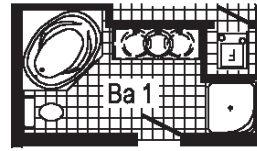
2864 - Approx 1707 Sq. Ft.



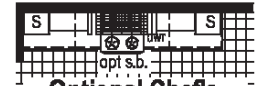
**Optional
Stairwell**
(omits g.c.)



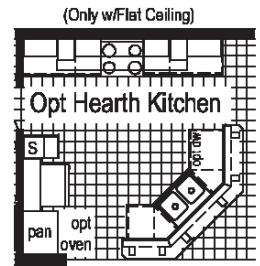
Opt. Corner Shower



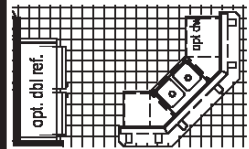
**Optional
Glamour
Bath**
(omits linen)



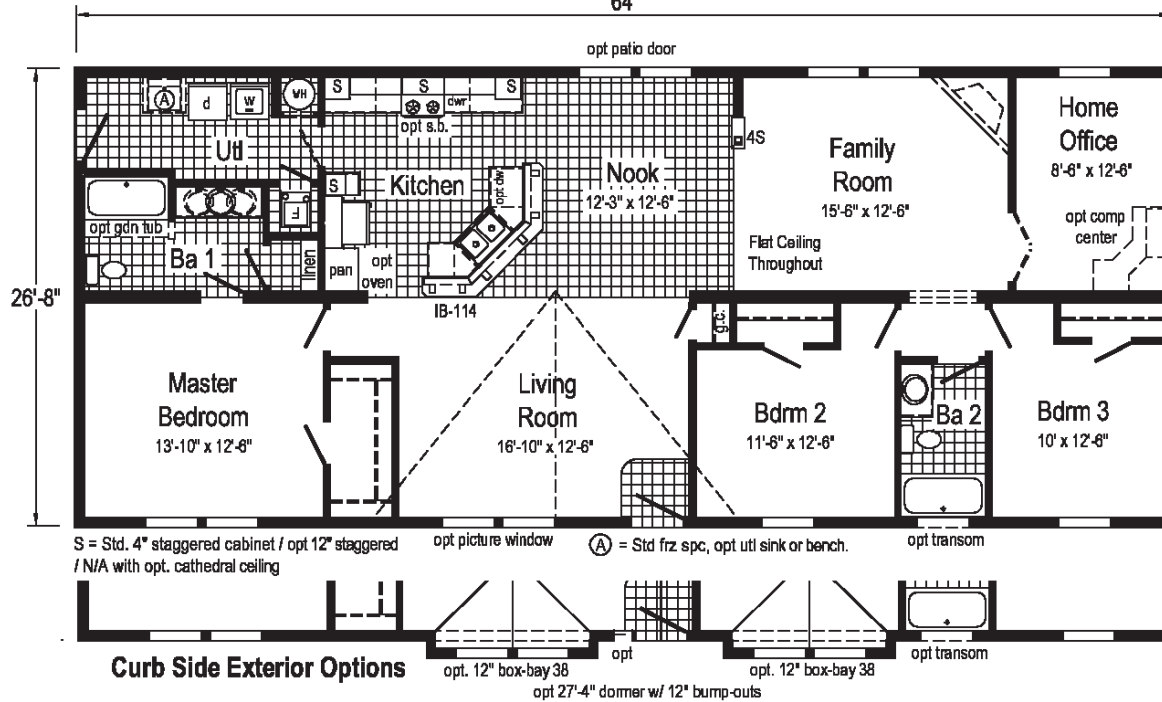
**Optional Chef's
Signature Hood**
(only with flat ceiling)



Opt. Double Refrigerator or Opt Freezer/Ref Combo
(frz./ ref. combo only with flat ceiling)
(omits pantry/ opt oven)

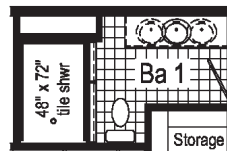


Opt Bdrm 4
(rep. Home Office)
8'-6" x 12'-6"

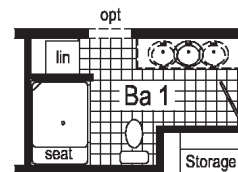


Tanoak (773A)

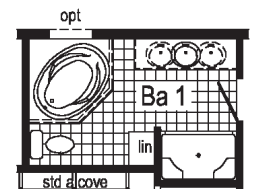
2868 - Approx 1813 Sq. Ft.



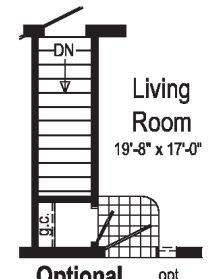
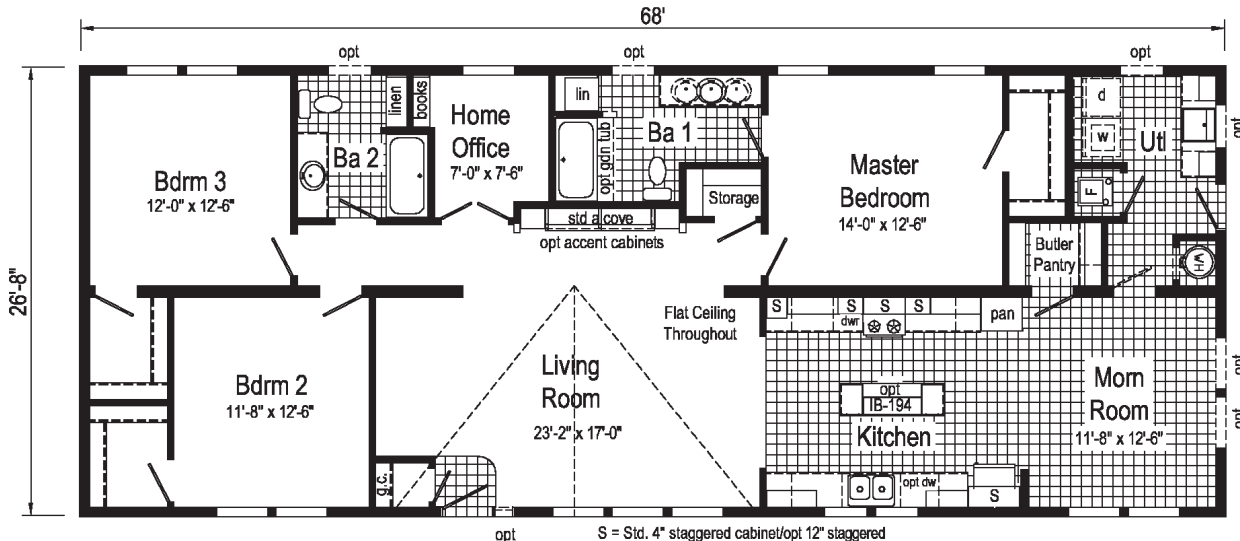
Optional 4' x 6'
Walk-In Tile Shower
(omits linen)



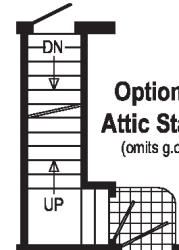
**Optional 60"
Shower w/Seat**



Optional Glamour Bath
(omits linen closet)
(omits storage)



Optional Stairwell



**Optional
Attic Stairs**
(omits g.c.)

Juniper (833A)

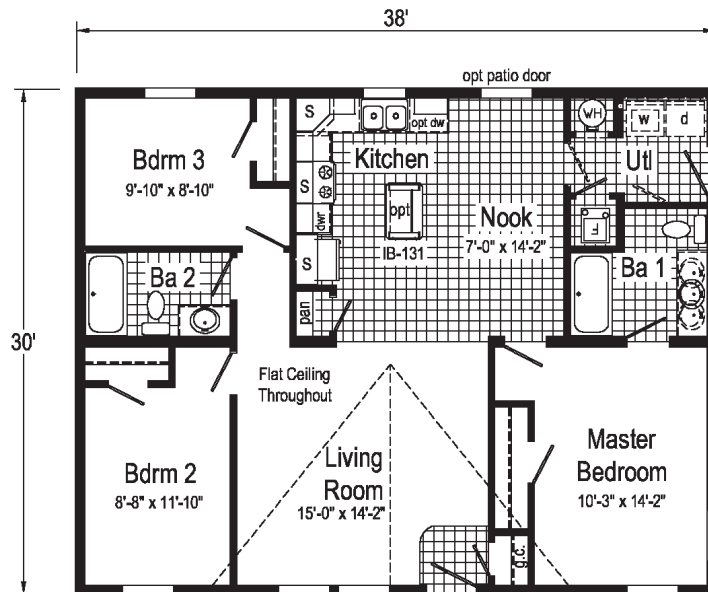
3238 - Approx 1140 Sq. Ft.



Additional Options Built On-Site by Others

Options Pictured:

- 7/12 Roof
- 27'-4" Twin Peak Dormer



Optional Stairwell N/A with this plan

S = Std. 4" staggered overhead cabinet / Opt 12" staggered / N/A with opt. cathedral ceiling

Not Available as a HUD



**Opt Double Refrigerator
or Opt Freezer/Ref. Combo**
(frz/ref. combo only with flat ceiling)

Elmwood (844A)

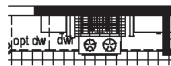
3240 - Approx 1128 Sq. Ft.



Additional Options Built On-Site by Others

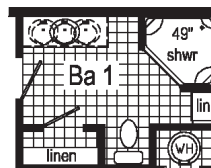
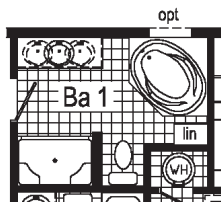
Options Pictured:

- 22' Flush Dormer
- Coastal Shores Siding
- Vertical Siding

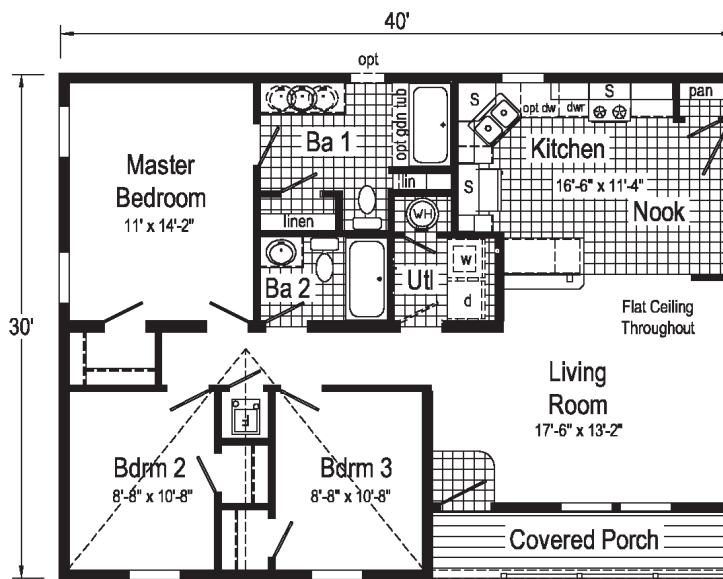


Optional Chef's Signature Hood
(only with flat ceiling)

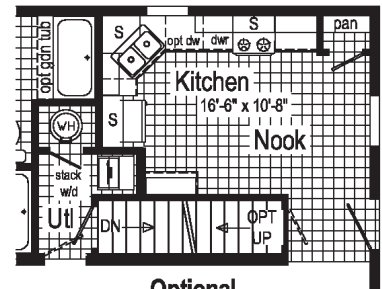
Optional Glamour Bath
(omits linen)



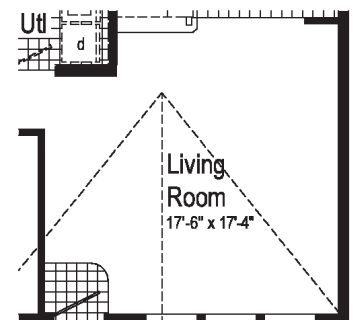
Opt. Corner Shower



S = Std. 4" staggered cabinet/opt 12" staggered
/ N/A with opt. cathedral ceiling



Optional Stairwell
(omits base cab w/ bar & bath 1 lin)



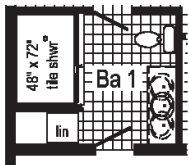
Alternate Plan without Covered Porch
Approx. 1200 Sq. Ft.

Mulberry II (838A)

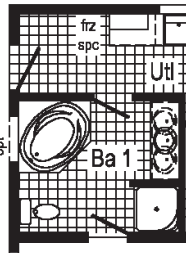
3260 - Approx 1800 Sq. Ft.



**Opt Double Refrigerator
or Opt Freezer/Ref. Combo**
(frz/ref. combo only with flat ceiling)
(omits pantry's)

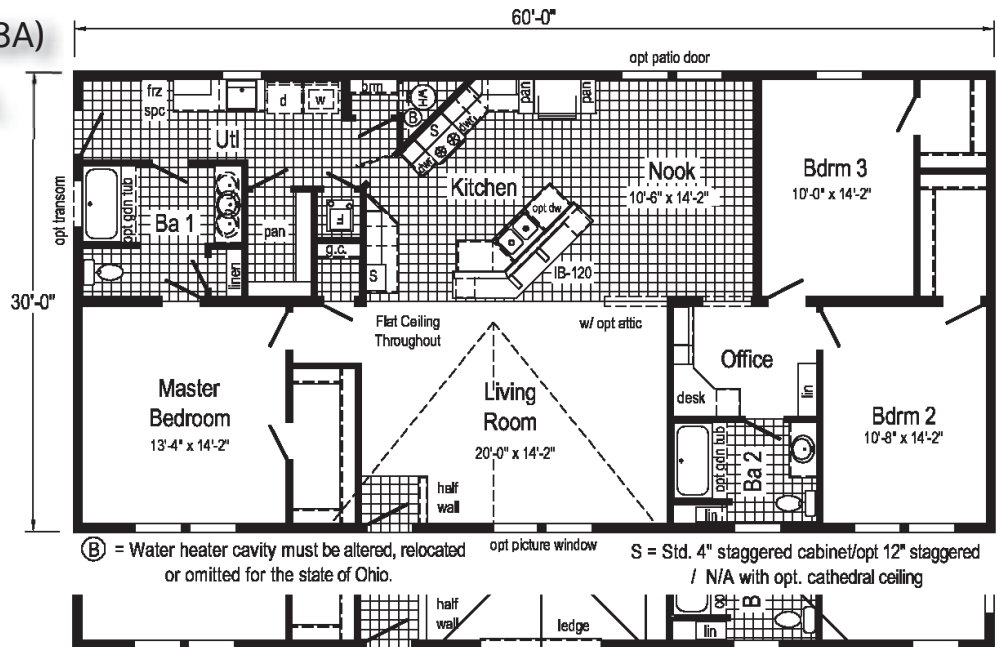


**Optional
4'x6' Walk-In
Tile Shower**

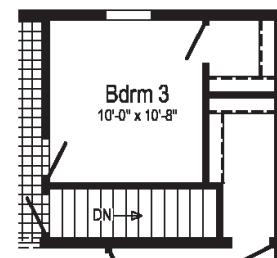
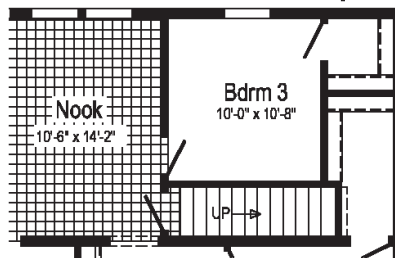


**Optional
Glamour
Bath**
(omits linen)

**Optional
Attic Stairs**



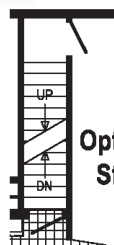
Curb Side Exterior Options



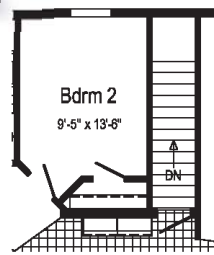
**Optional
Stairwell**

Riverwood (855A)

3276 - Approx 2280 Sq. Ft.

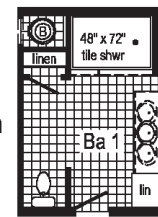


**Opt Attic
Stairs**

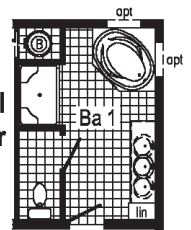


**Optional
Stairwell**

**Optional
4' x 6' Walk-In
Tile Shower**

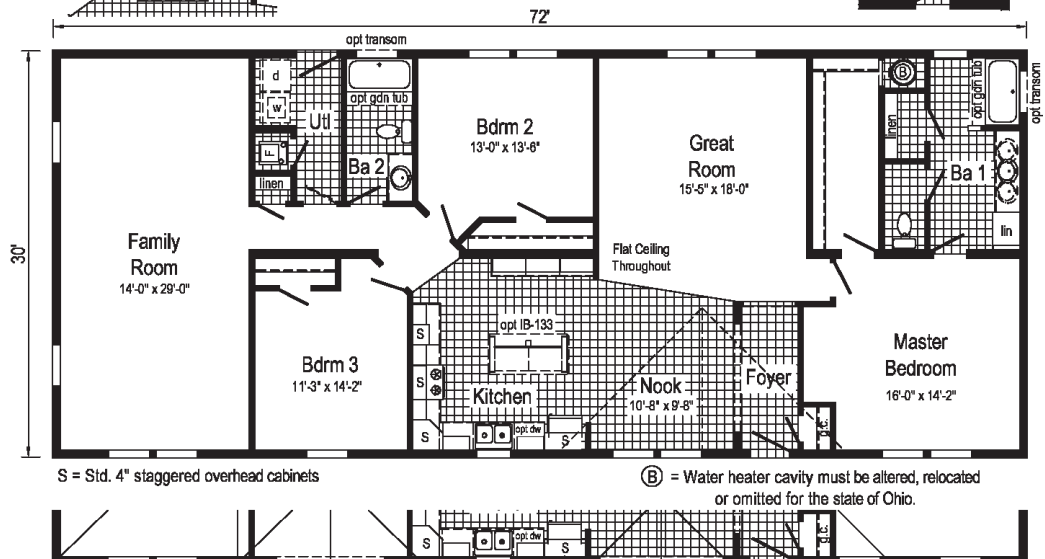


**Optional
Glamour
Bath**



**Optional
Family
Retreat**

(replaces family room)
● = Std. can light



Curb Side Exterior Options

Pinewood (806A)

3276 - Approx 2280 Sq. Ft.



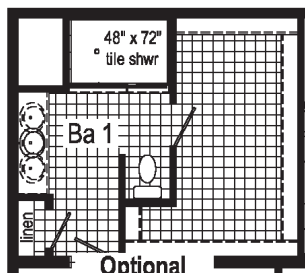
Additional Options Built On-Site by Others

Options Pictured:

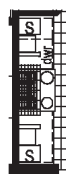
- 7/12 Roof
- 27'-4" Twin Peak Dormer with 9" Bump-out

- 10' Box Bay 52
- Oval Front Door
- Clay Package

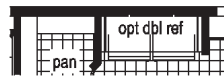
- Coastal Shores Siding
- Shake Siding
- Vertical Siding



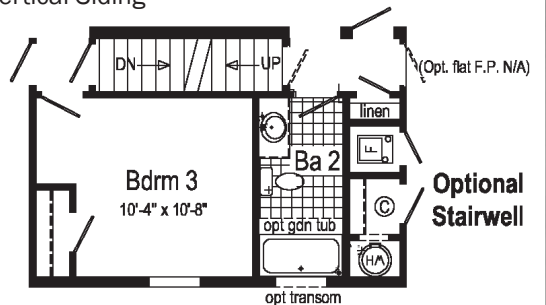
Optional
4'x6' Walk-In
Tile Shower



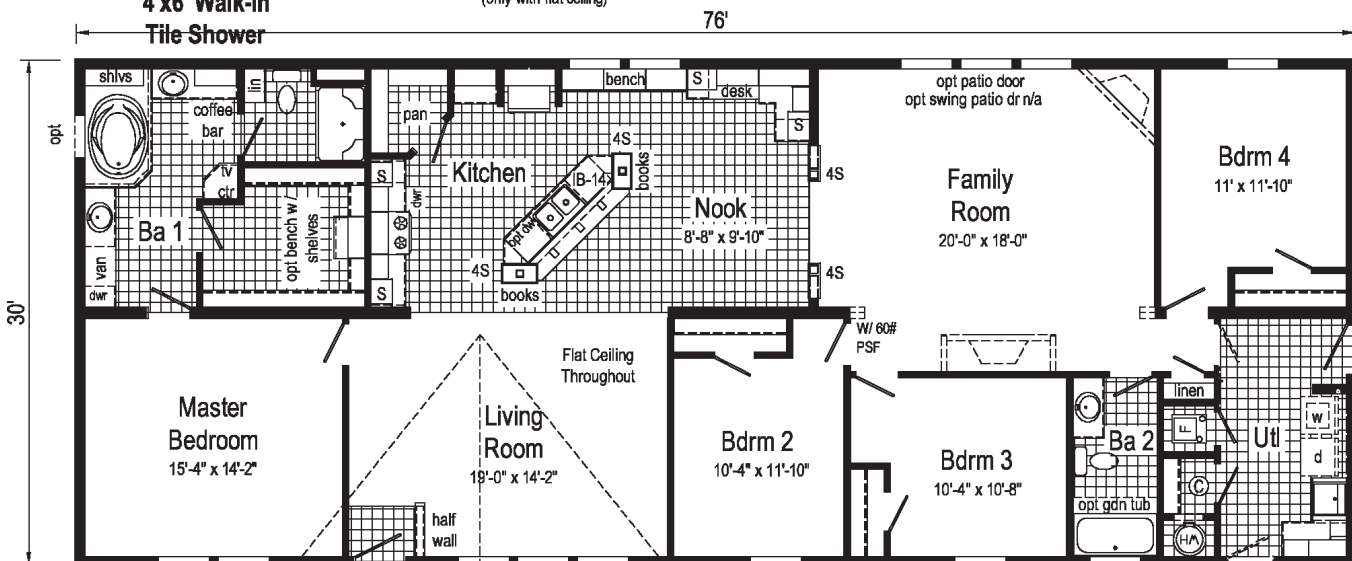
Optional Chef's
Signature Hood
(only with flat ceiling)



Opt Double Refrigerator
or Opt Freezer/Ref. Combo
(frz/ref. combo only with flat ceiling)



Optional
Stairwell



S = Std. 4" staggered cabinet/opt 12" staggered
/N/A with cathedral ceiling. © = Omit shelf and water heater
opt transom access wall for the state of Ohio.



Opt. 9' box-bay 52

Curb Side Exterior Options


Opt. 27'-4" dormer w/ 9" bump-out

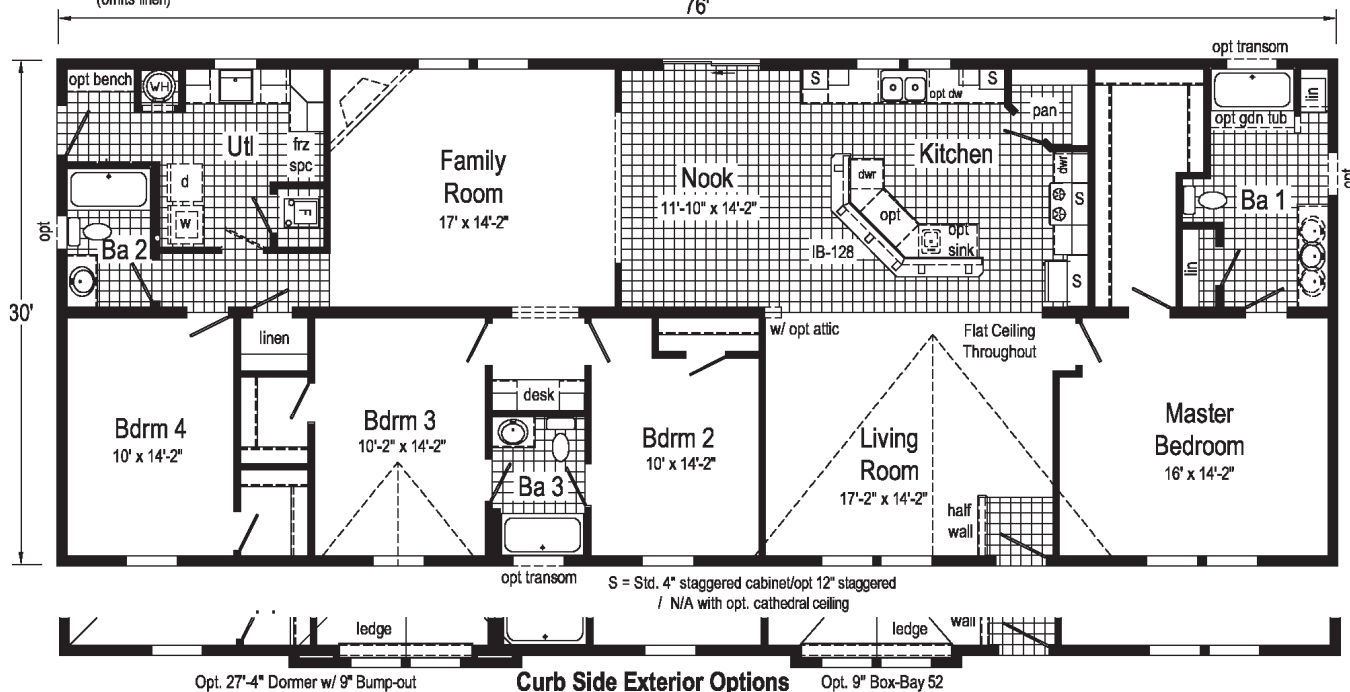
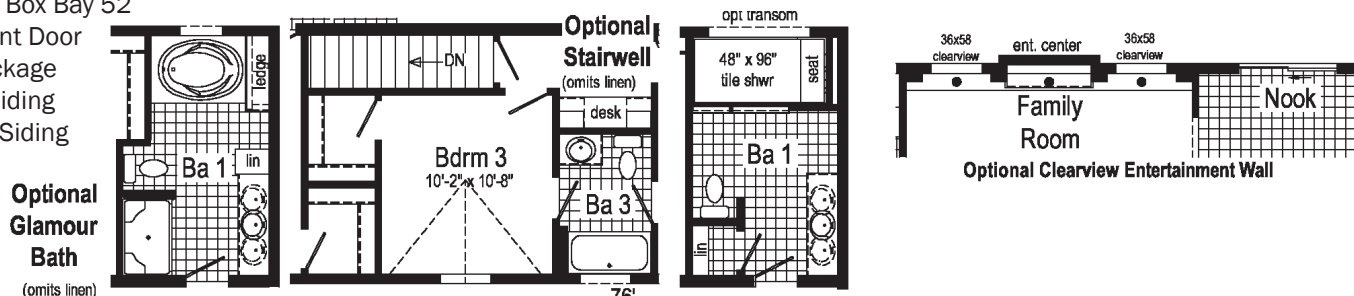
(842A)

3276 - Approx 2280 Sq. Ft.



7/12 Reef

- 7/12 Roof
 - 27'-4" Twin Peak Dormer with 9" Bump-out
 - 10' with Box Bay 52
 - Oval Front Door
 - Clay Package
 - Shake Siding
 - Vertical Siding
- 

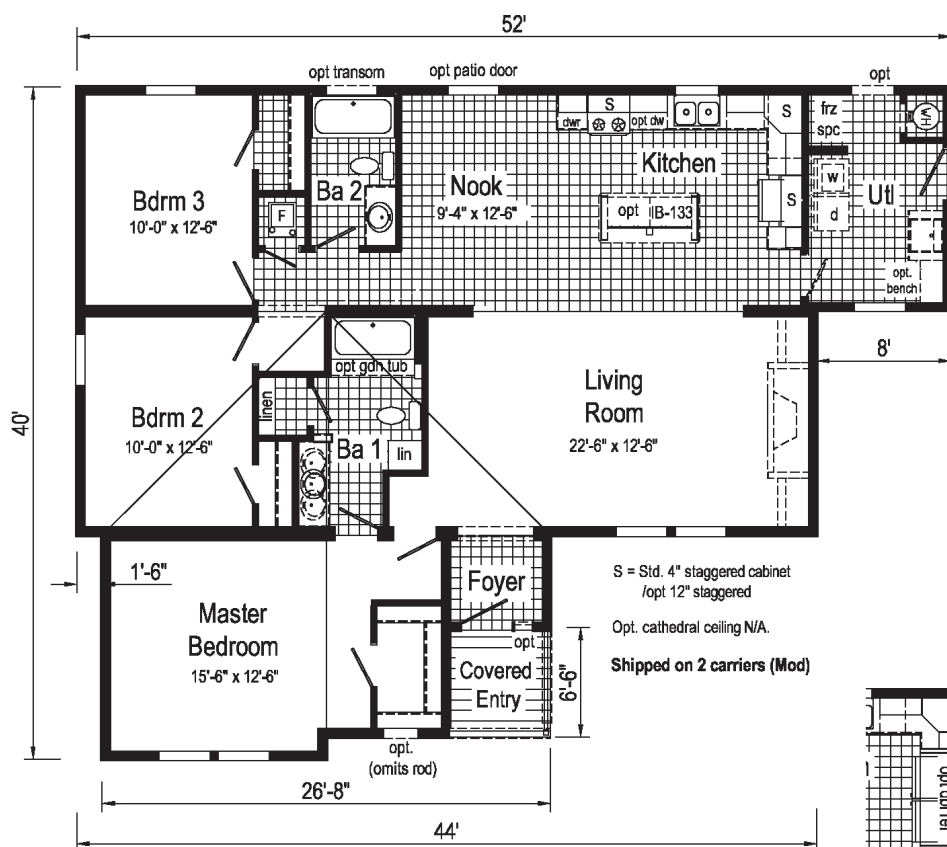


4252/44 - Approx 1580 Sq. Ft.



Options Pictured:

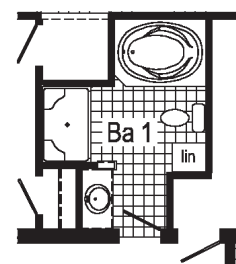
- 7/12 Roof
- Shake Siding
- Oval Front Door with Sidelite
- Vertical Siding



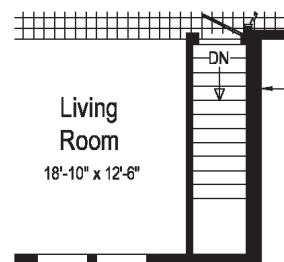
S = Std. 4" staggered cabinet
/opt 12" staggered

Opt. cathedral ceiling N/A.

Shipped on 2 carriers (Mod)



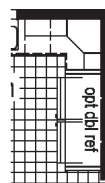
**Optional
Glamour
Bath**
(omits linen)



Optional Stairwell



Optional Attic Stairs



**Opt Double Refrigerator
or Opt Freezer/Ref. Combo**
(frz/ref. combo only with flat ceiling)

Birchwood (903A)

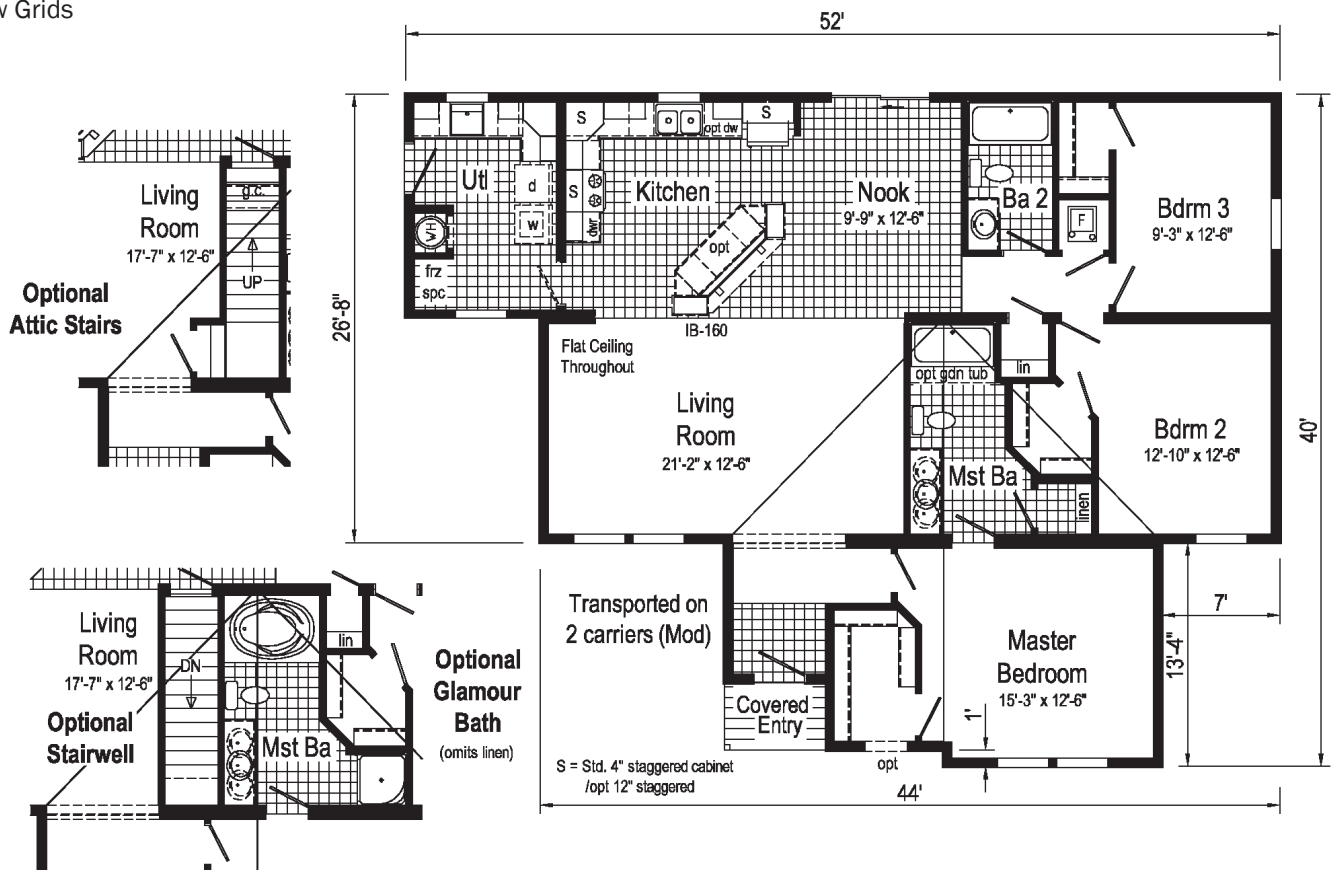
4252/44 - Approx 1588 Sq. Ft.



Additional Options Built On-Site by Others

Options Pictured:

- 7/12 Roof
- Round Top Front Door
- Window in Master Closet
- Vertical Siding
- Window Grids



Mulberry II (838A)

See Page 23



Additional Options Built On-Site by Others

Options Pictured:

- 27'-4" Twin Peak Dormer
- Vertical Siding
- Oval Front Door



www.commodore-in.com/inhouse-experience

1902 Century Drive
Goshen, IN 46528
574-534-3067

Note: Because of varying state requirements and optional equipment, some or all of the utility locations may change per floor plan. (i.e. furnace, stairwell, etc.) Consult your factory representative for exact specifications.



Connect with Us:



www.commodore-in.com

Your Independent Builder is:

Your purchase contract including options is with your retailer who is an independent contractor, not our agent, and is responsible totally for any alterations, exchanges, additions or attachments made in or to your home.
AP113106 5M 11/16

All descriptive representations of the products on this brochure are believed to be correct at the time of publication. However, due to continued product improvement and changes in suppliers design and production, accuracy cannot be guaranteed. Therefore, equipment colors, material specifications, prices and model availability are subject to change without notice.
All information and images contained in this brochure are property of The Commodore Corporation and for the use by active dealers of the company only. ©